

How to turn on Google Translate in isolved



This quick guide walks through the steps to turn on google translate in isolved. Some of the words are direct translations and may not be perfect.

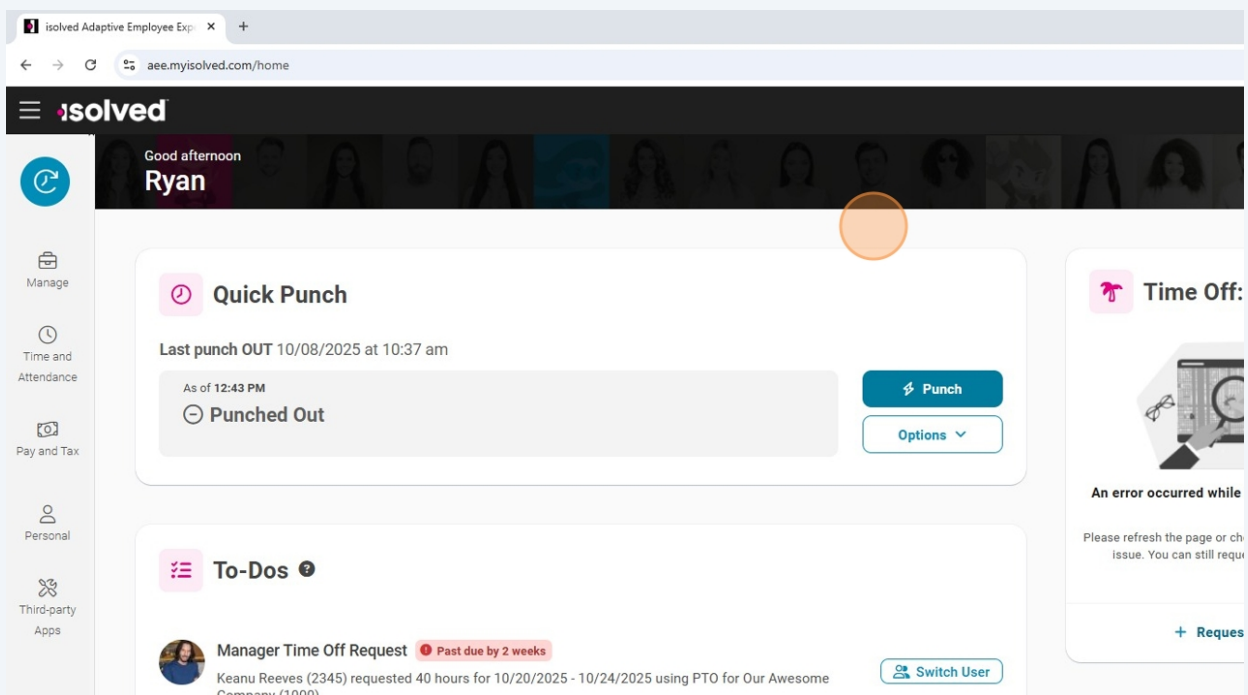
For example, quick punch is golpe rapido and should be marcar tarjeta

Esta guía rápida explica los pasos para activar el Traductor de Google en isolved.

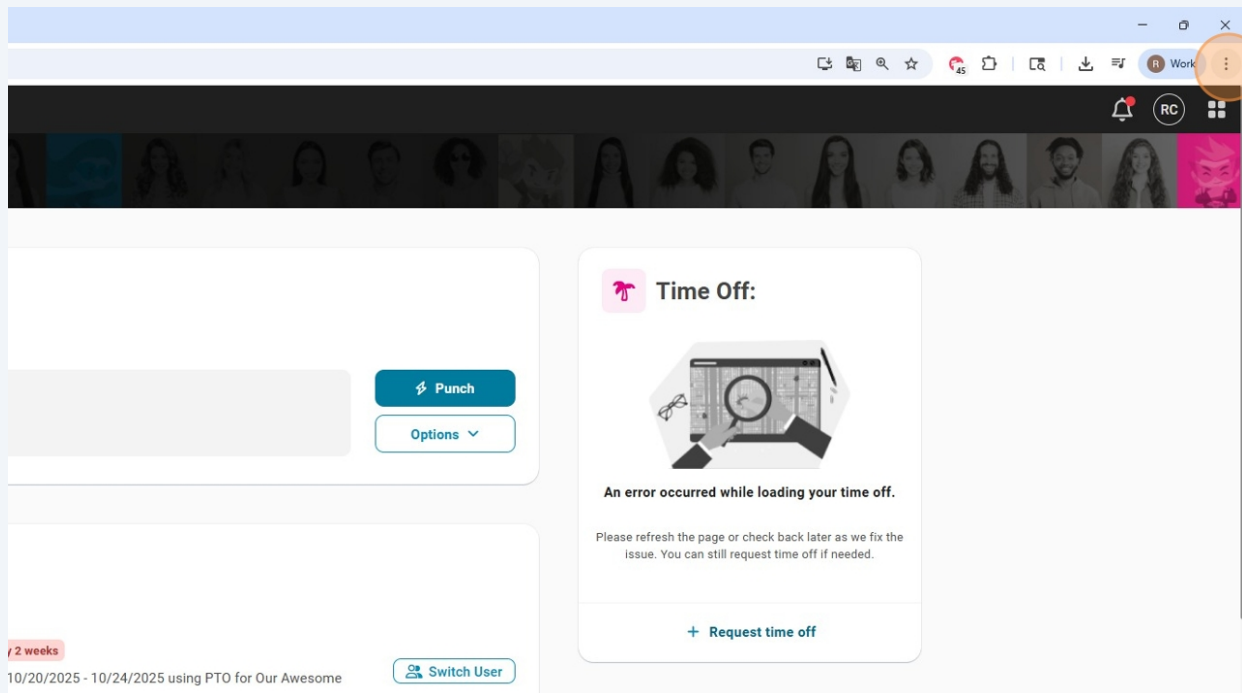
Algunas palabras son traducciones directas y podrían no ser perfectas.

Por ejemplo, "quick punch" es "golpe rápido" y debería ser "marcar tarjeta".

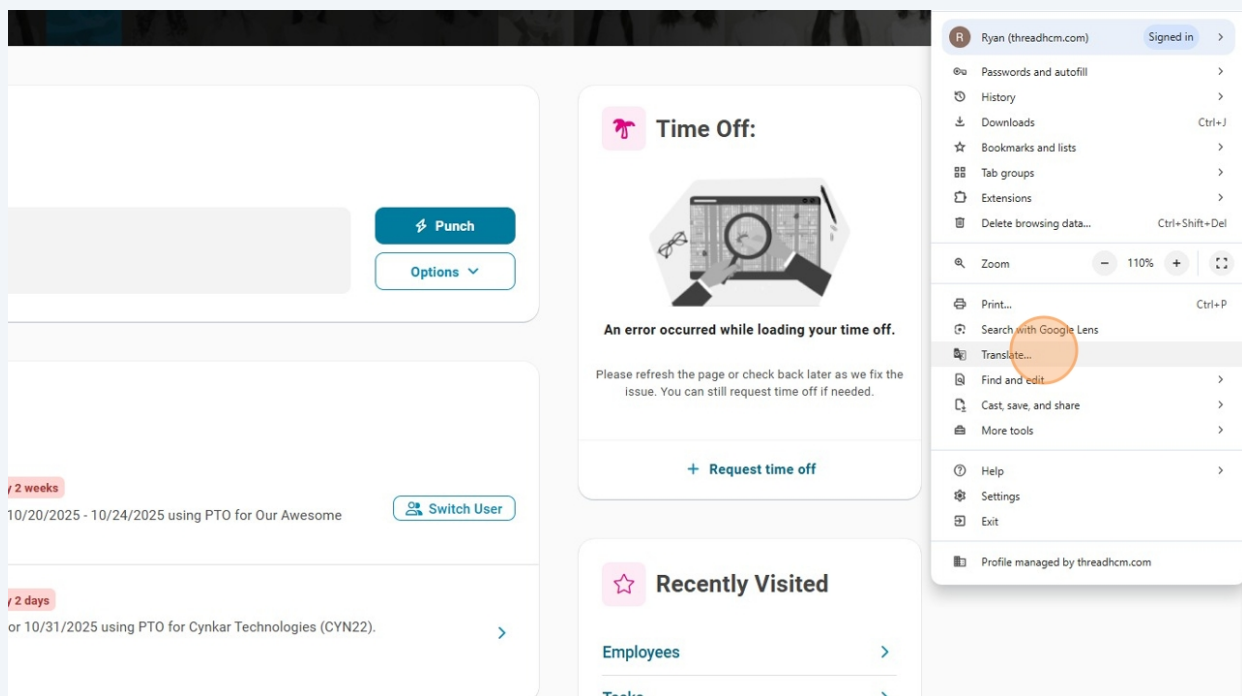
1 Navigate to <https://aee.myisolved.com/home>



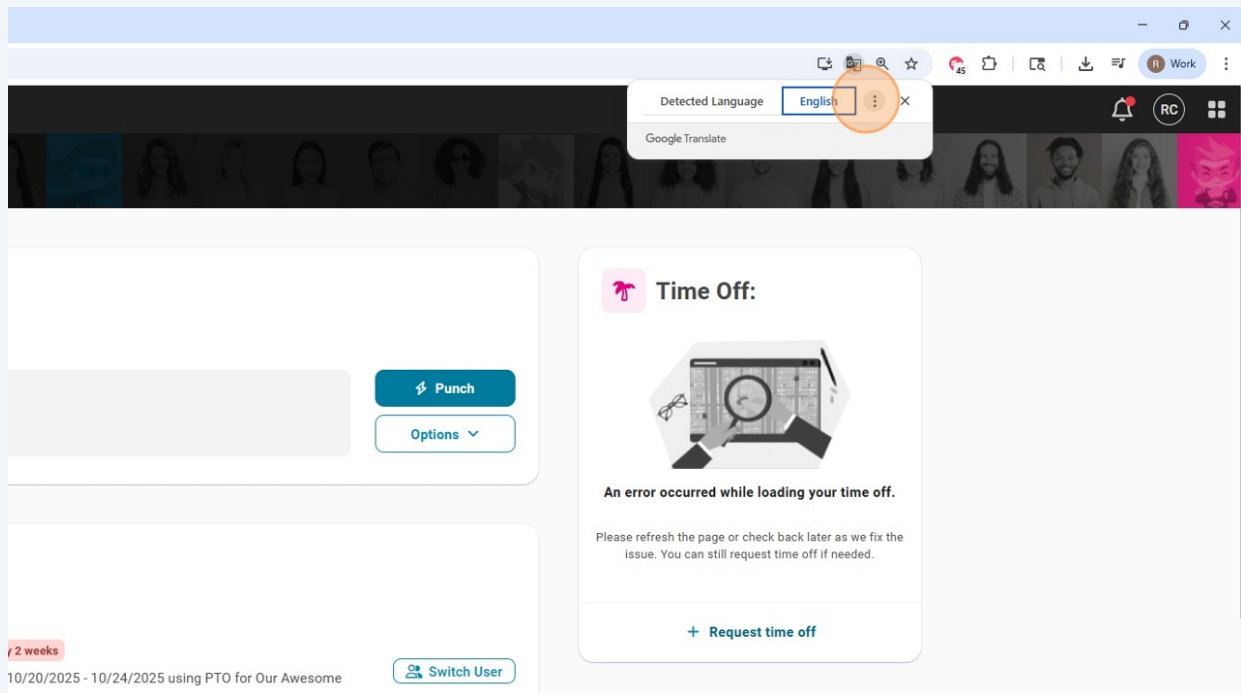
2 Click the dots in the top right.



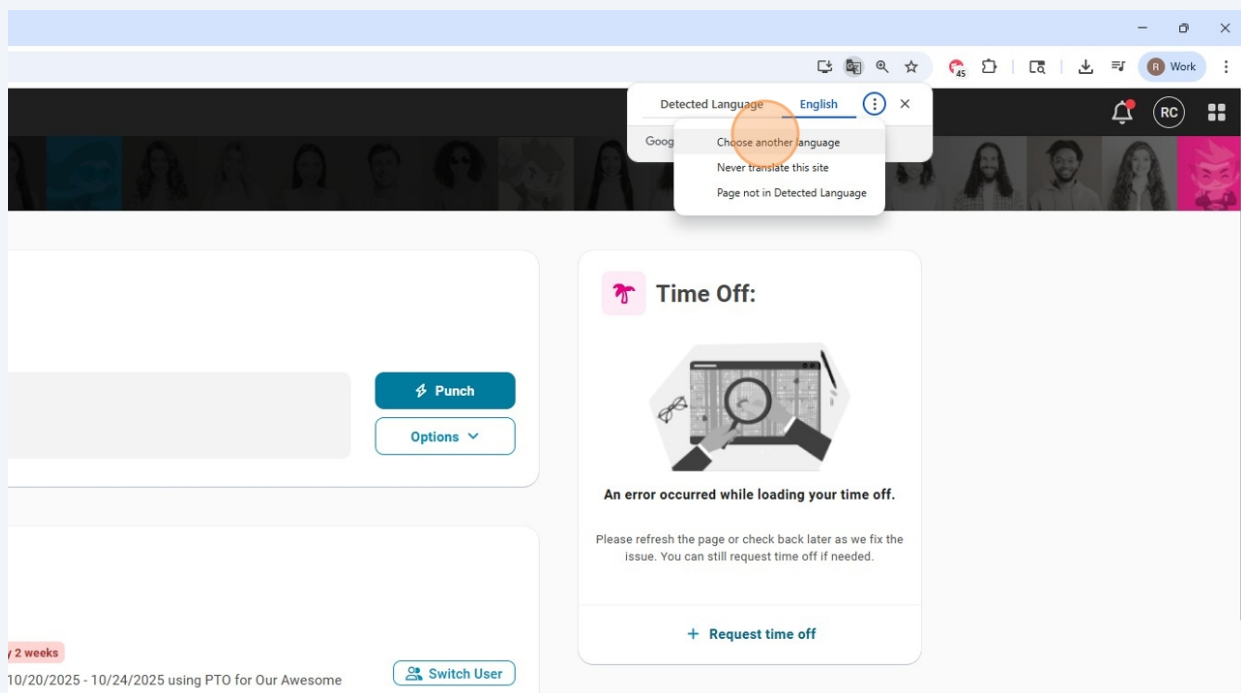
3 Click "Translate..."



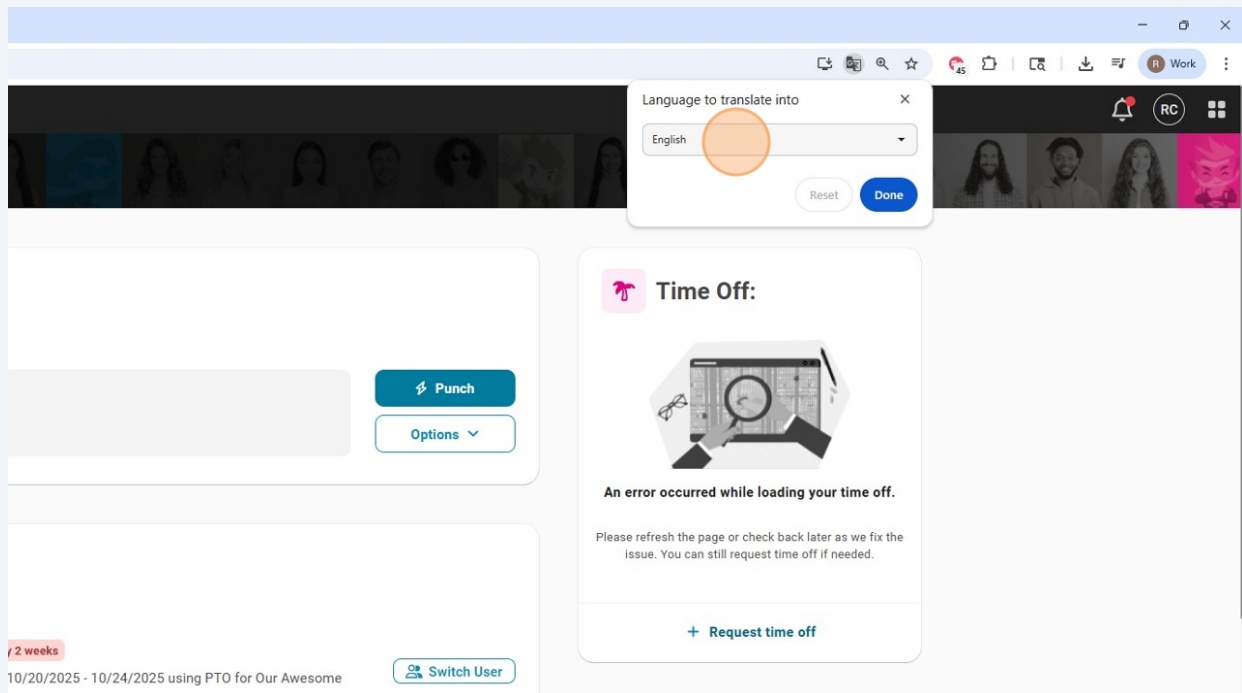
4 Click "Translate options"



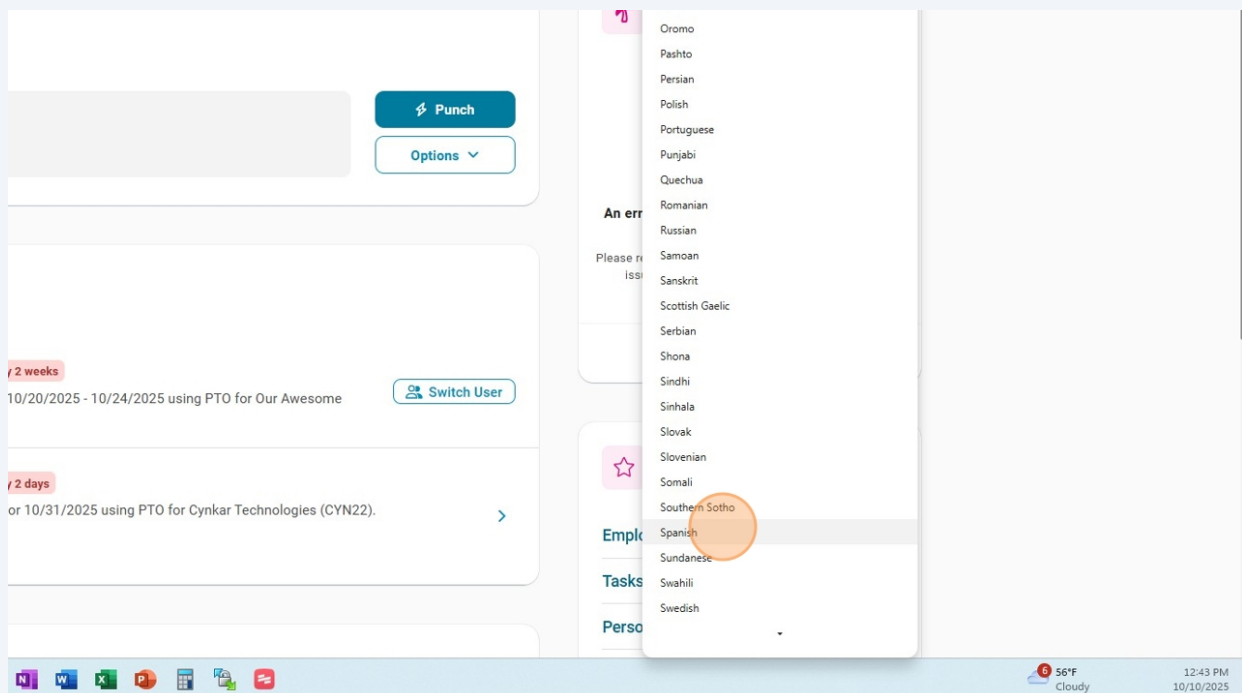
5 Click Choose another language



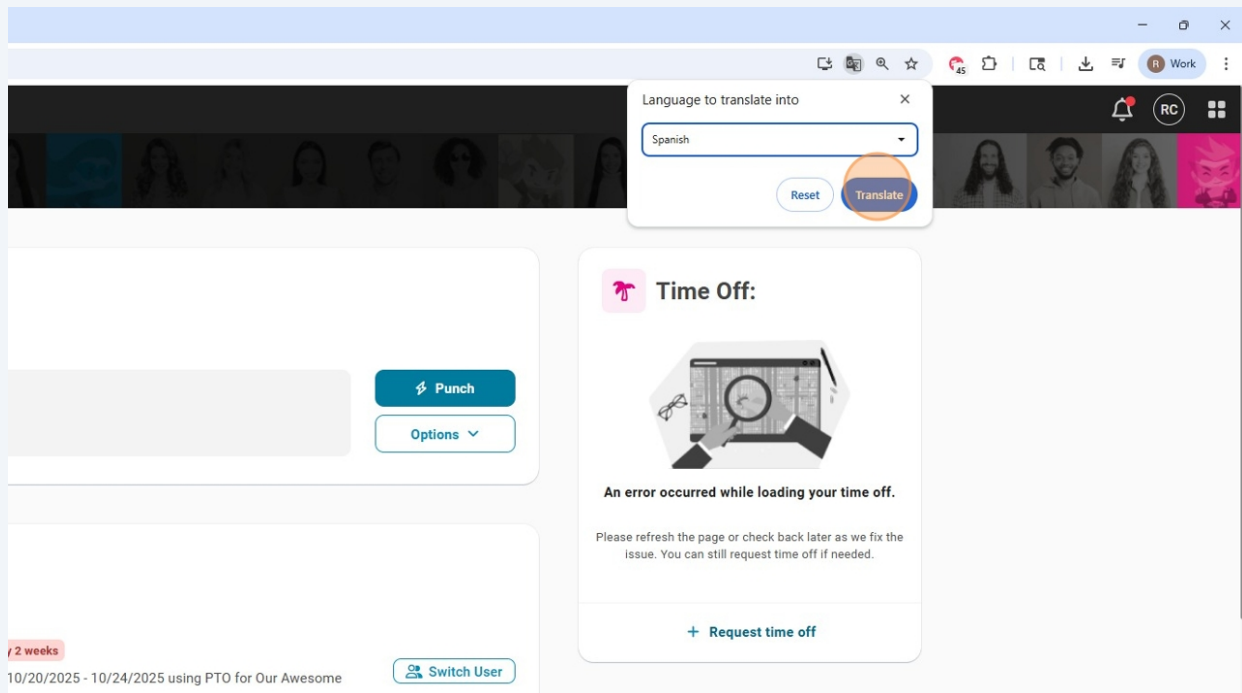
6 Click the list



7 Click "Spanish"



8 Click "Translate"



9 Now you'll see everything in your language

